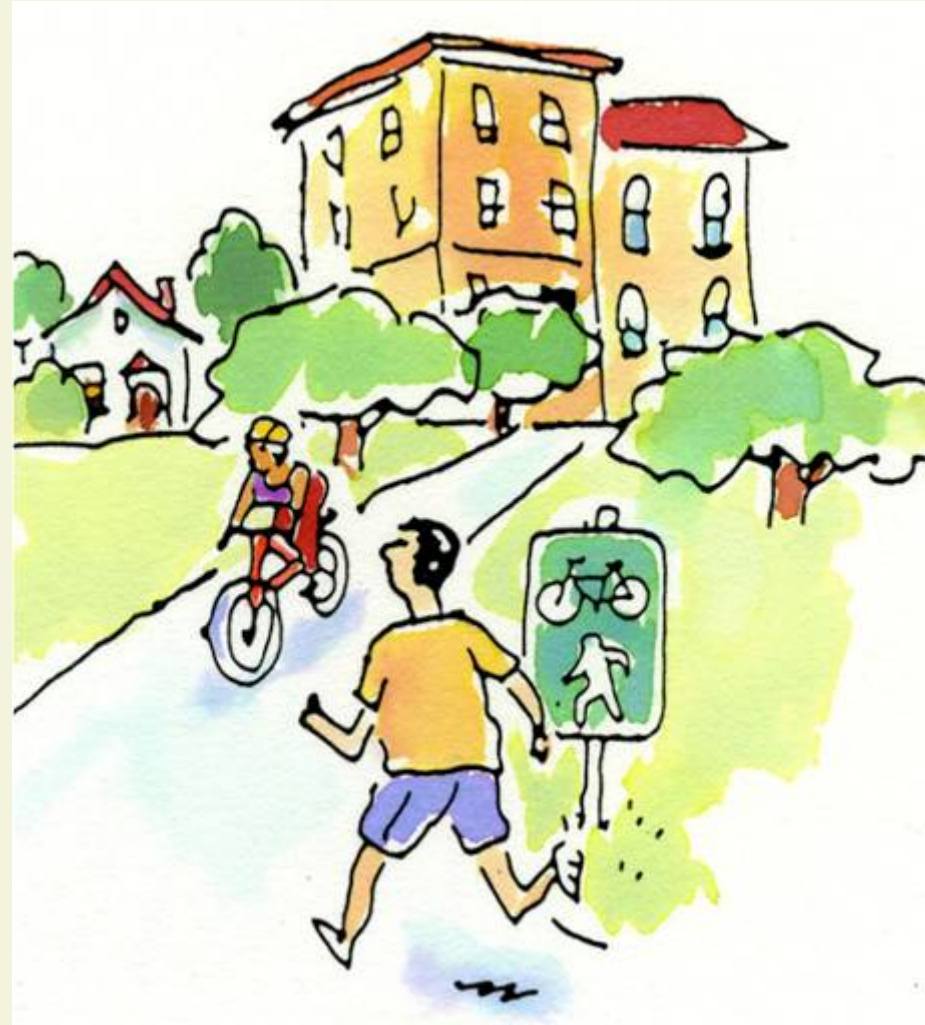


Promoting Healthy Eating and Active Living Through Improvements in the Built Environment



- Who makes land use decisions in California?
- And what gives them the authority to do so?



February 8, 2007

Police Power

- The police power is the natural prerogative of a sovereign government to enact laws, promulgate regulations, and take action to protect, preserve and promote public health, safety and welfare.



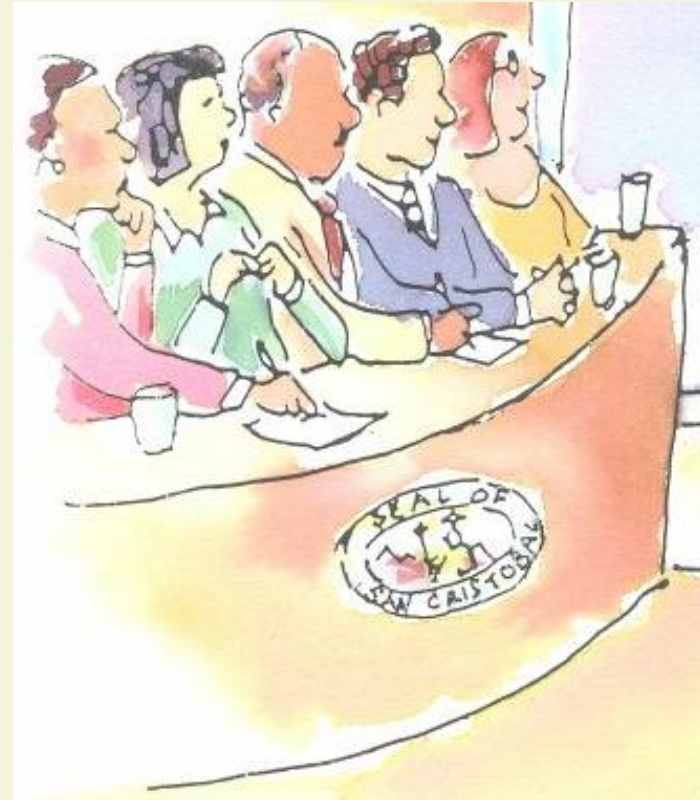
Police Power



- The police power is an inherent authority of the states, and states can delegate their police power to local governments.
- In California, this delegation is authorized in the state constitution.

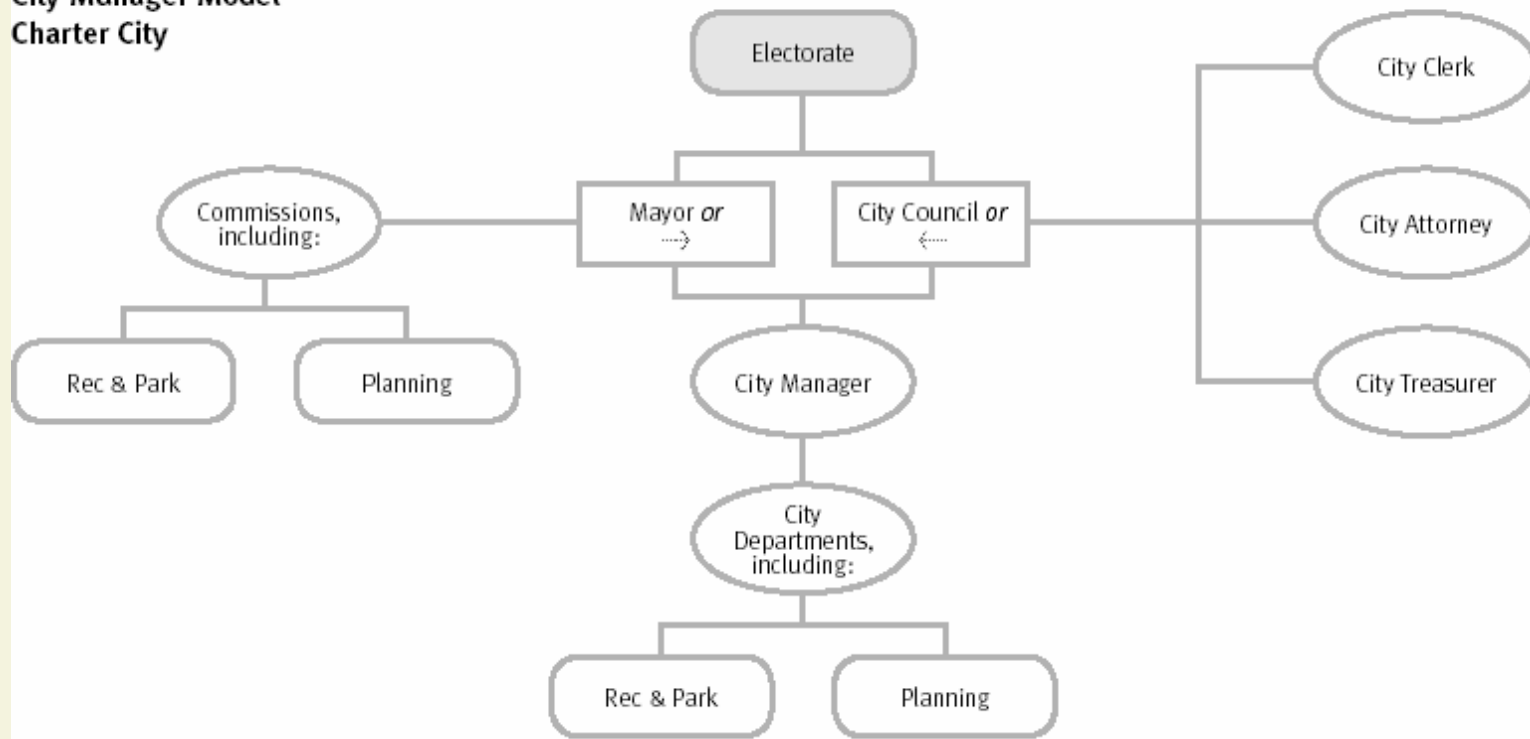
Who makes land use decisions?

- Ultimately:
 - County Board of Supervisors or City Council
- But also goes through:
 - Planning Commission (and possibly some other commissions, too)



One model of City Government

City Organizational Chart
City Manager Model
Charter City



One model of County Government

**County Organizational Chart
County Administrator Model**

