



Kollin Min
Enterprise Community Partners
New Partners for Smart Growth Conference
Los Angeles, CA
February 2007





Enterprise Mission:

Provide low-income people the opportunity for **fit and affordable** housing and the ability to **move up and out of poverty** into the mainstream of American life.



Housing: a means to an end

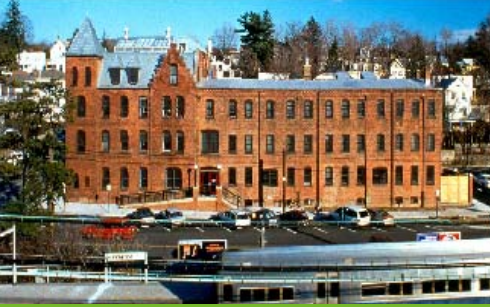


Focus is people, not buildings



Holistic approach





Green Communities™

5-year, \$555 million initiative;
8,500 healthy, sustainable, affordable homes

- ✓ **Grants**
- ✓ **Low-Interest Loans**
- ✓ **LIHTC Equity Investments**
- ✓ **Education / Policy**





Green Communities Criteria

- Developed in partnership with the Natural Resources Defense Council
- Specifically aimed at the needs for low-income families
- More mandatory elements than LEED





Green Communities™ Criteria

- Integrated Design Process
- Location and Neighborhood Fabric
- Site Improvements
- Water Conservation
- Sustainable Building Materials
- Healthy Living Environment
- Operations and Maintenance





Green Communities™ Benefits

- ✓ Energy efficient
- ✓ Lower utility costs
- ✓ Healthier homes
- ✓ Smarter communities
- ✓ Resource conservation
- ✓ Sustainable development
- ✓ Waste out of landfills





Breathe Easy Homes: Building New Asthma-Friendly Homes

■ 35 Units at High Point in Seattle, WA

Insulated slab to keep floor warm and dry

Exterior grade plywood

Airtight drywall with low-emission joint compound

Cement board exterior siding over house wrap

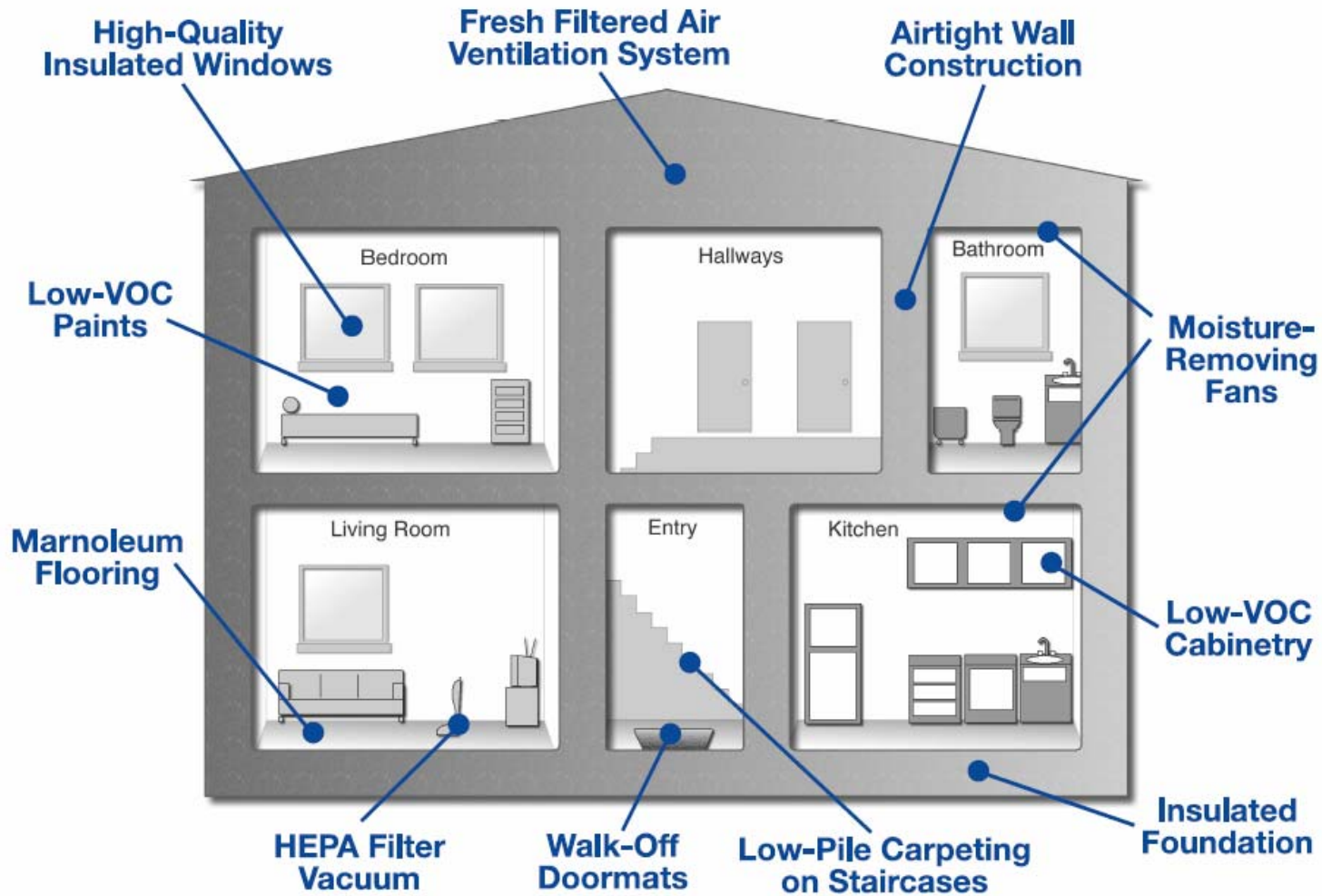
Low emission doors, trim, finishes, adhesives

Hard surface floors (marmoleum)

Enhanced ventilation

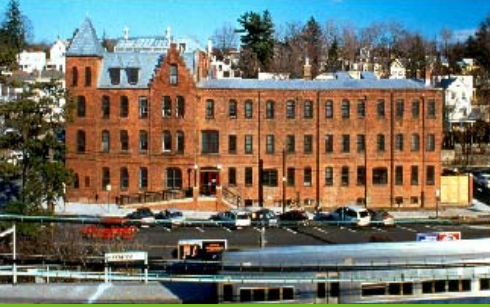
Radiant/Hydronic baseboard heat to decrease humidity





HIGH POINT BREATHE EASY HOMES

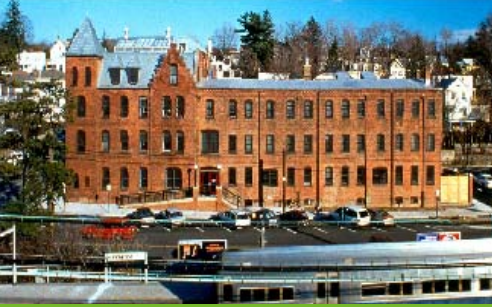




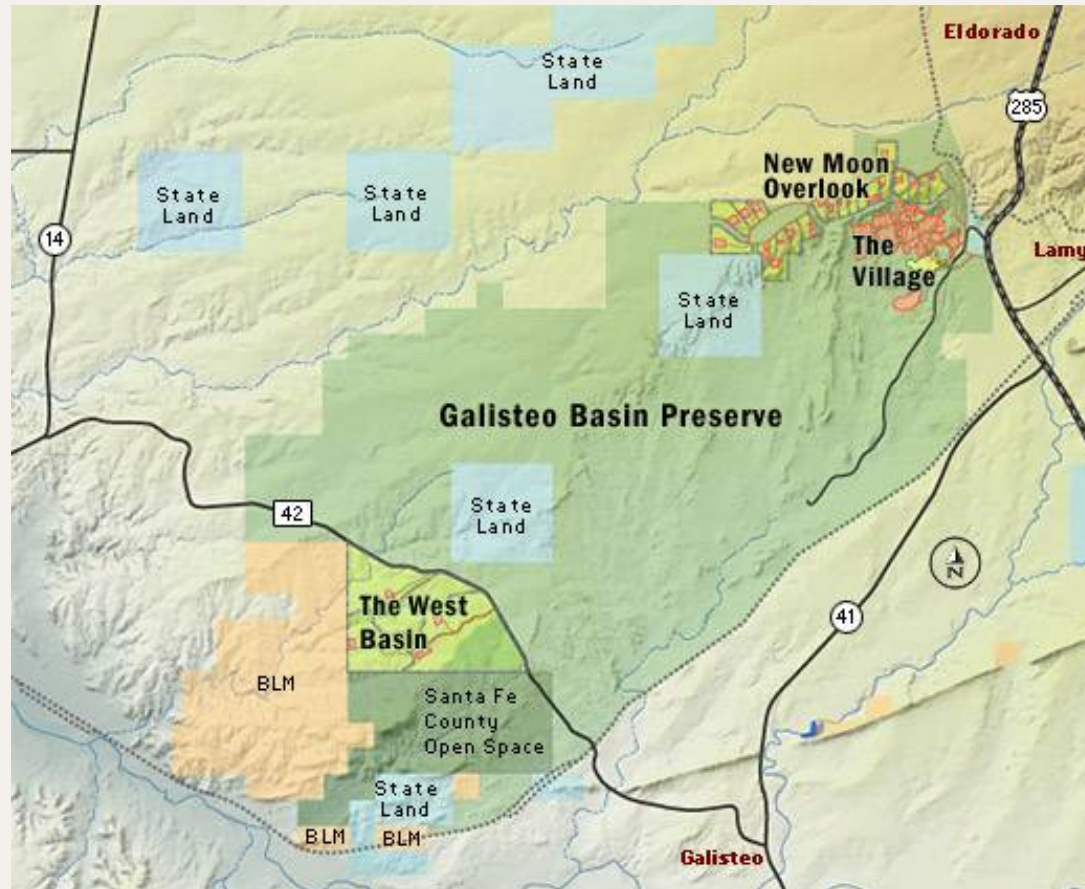
What's Next for Green Affordable Housing?

- Not just about a green standard or checklist; improving the lives of low-income families and improving our communities.
- Increasing awareness of the need to think holistically about creating strong, healthy, mixed-income neighborhoods.
- With doubling of population over next 100 years, “drive until you can afford it” cannot continue to be the norm.
- Enterprise is working with conservation groups think about how affordable housing and building green can help to preserve regional livability.





Conservation Based Affordable Housing





Contact:

Enterprise Community Partners

Kollin Min

206.223.4517

kmin@enterprisecommunity.org

Request the Green Communities Criteria at:

www.greencommunitiesonline.org

