

THE TRUST *for* PUBLIC LAND
CONSERVING LAND FOR PEOPLE



Protecting Land as a Smart Growth and Clean Water Tool

Caryn Ernst
February 7, 2008

Why Protect Land?

- Replacing natural land cover with impervious surfaces turns a green sponge into a grey funnel.
- Increased volume and velocity of stormwater scours streambanks and deposits sediment and urban pollutants in waterways.
- Watershed protection should combine targeted land protection with smarter land development.



Protecting Land as Smart Growth and Clean Water Tool

- Brief Overview of TPL
- Deciding where to protect
- Protecting land using voluntary, market-based tools
- How to pay for it

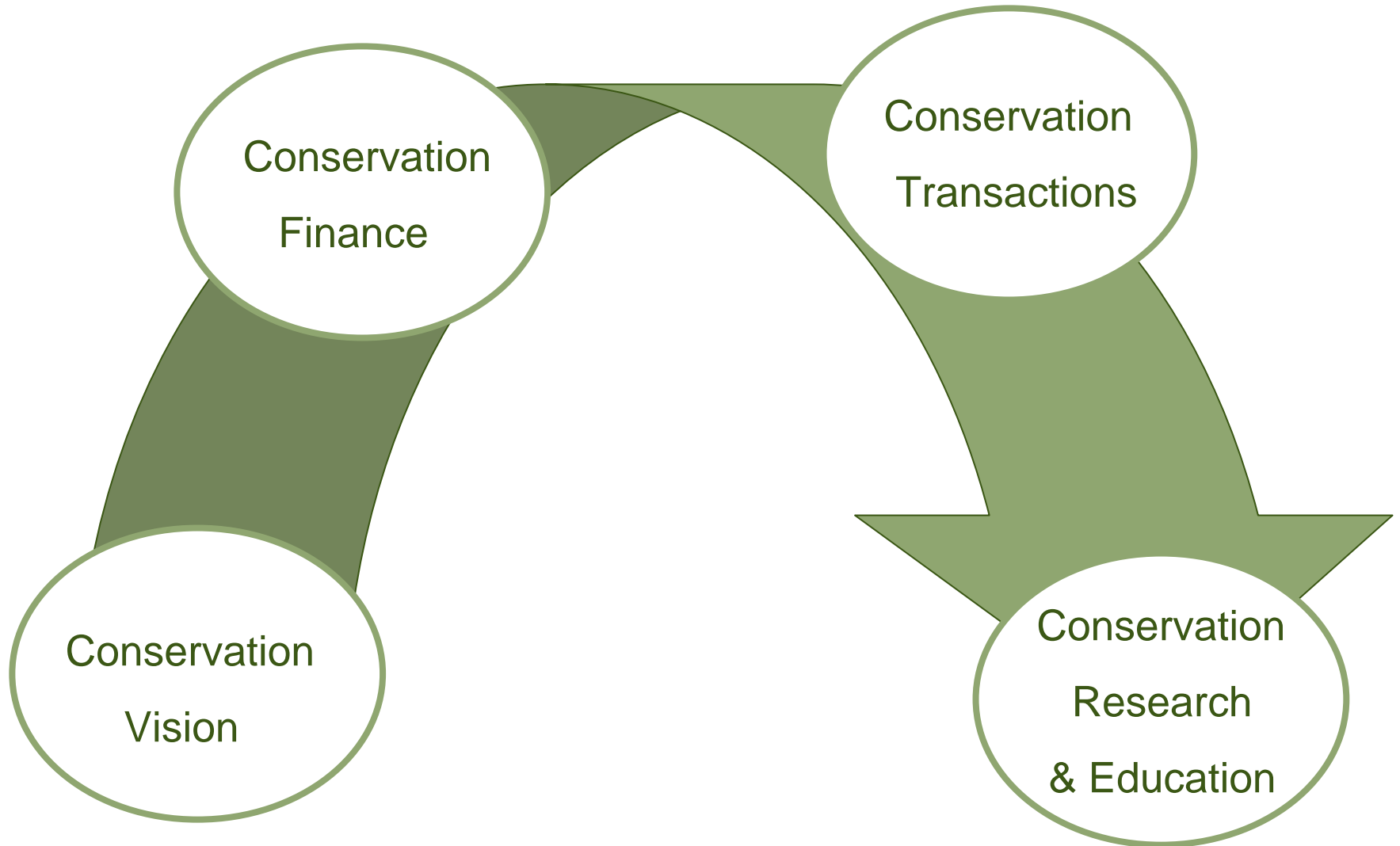


Conserving Land for People

The Trust for Public Land conserves land for people to enjoy as parks, gardens, and other natural places, ensuring livable communities for generations to come.

TPL Mission Statement

With over 400 staff working in 40 offices in six regions, a local TPL office is most likely located near you



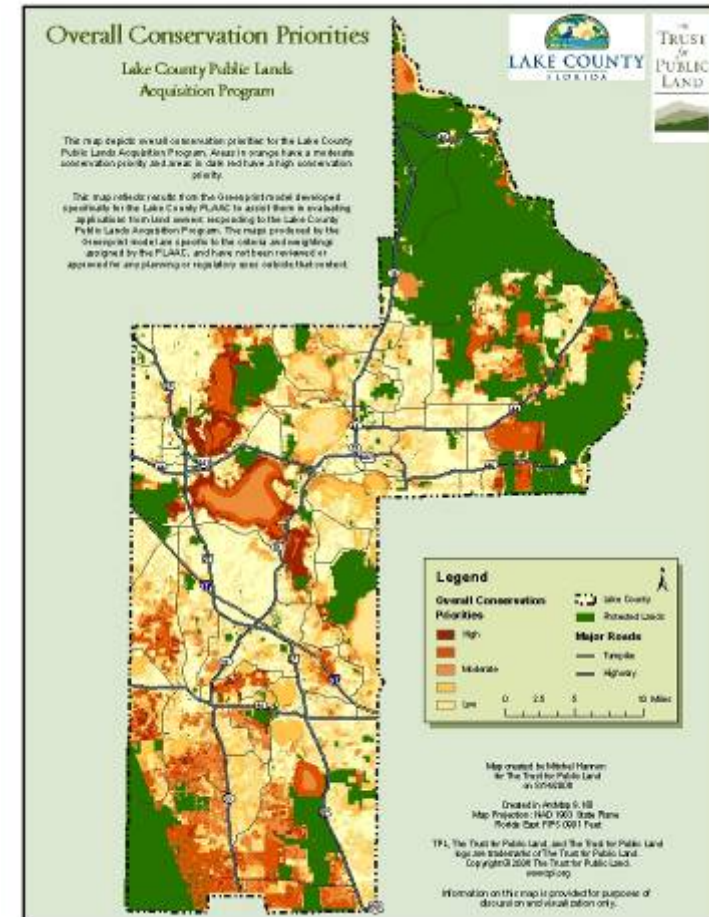
Protecting Land as Smart Growth and Clean Water Tool

- Brief Overview of TPL
- Deciding where to protect
- Protecting land using voluntary, market-based tools
- How to pay for it



Protecting Land for Multiple Benefits

- Connecting communities with greenways and trails
- Creating neighborhood parks
- Mitigating flooding
- Protecting drinking water sources
- Directing economic development to high growth areas, while enhancing quality of life



Need to establish clear goals and criteria that reflect community values

Protect Water Resources

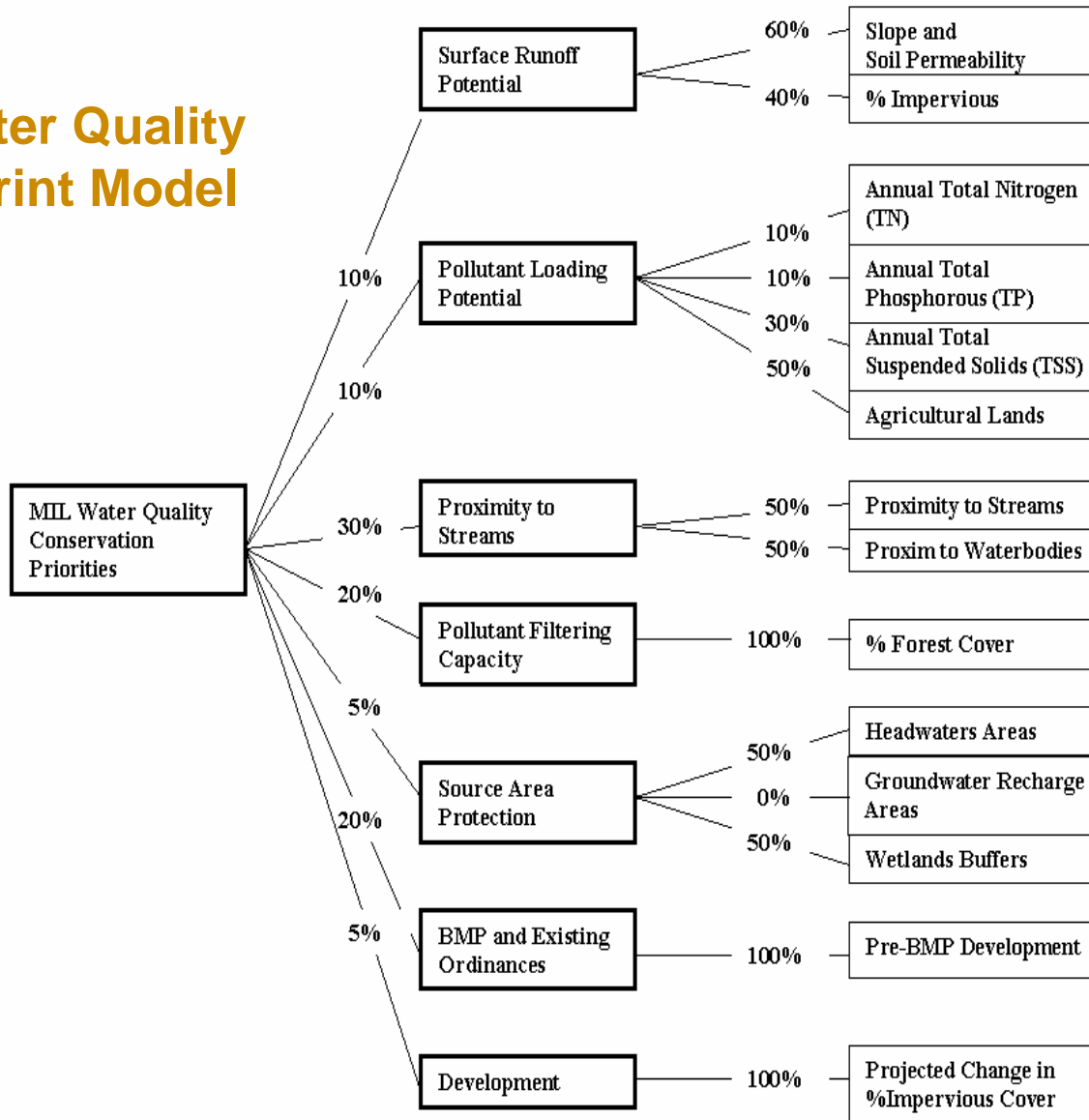
- High recharge rates
- Floodplains
- First and second order streams
- Drinking water source areas

Create Connectivity

- Connect residential areas with commercial areas and schools
- Link local and regional trails
- Extend Little Sugar Creek Trail

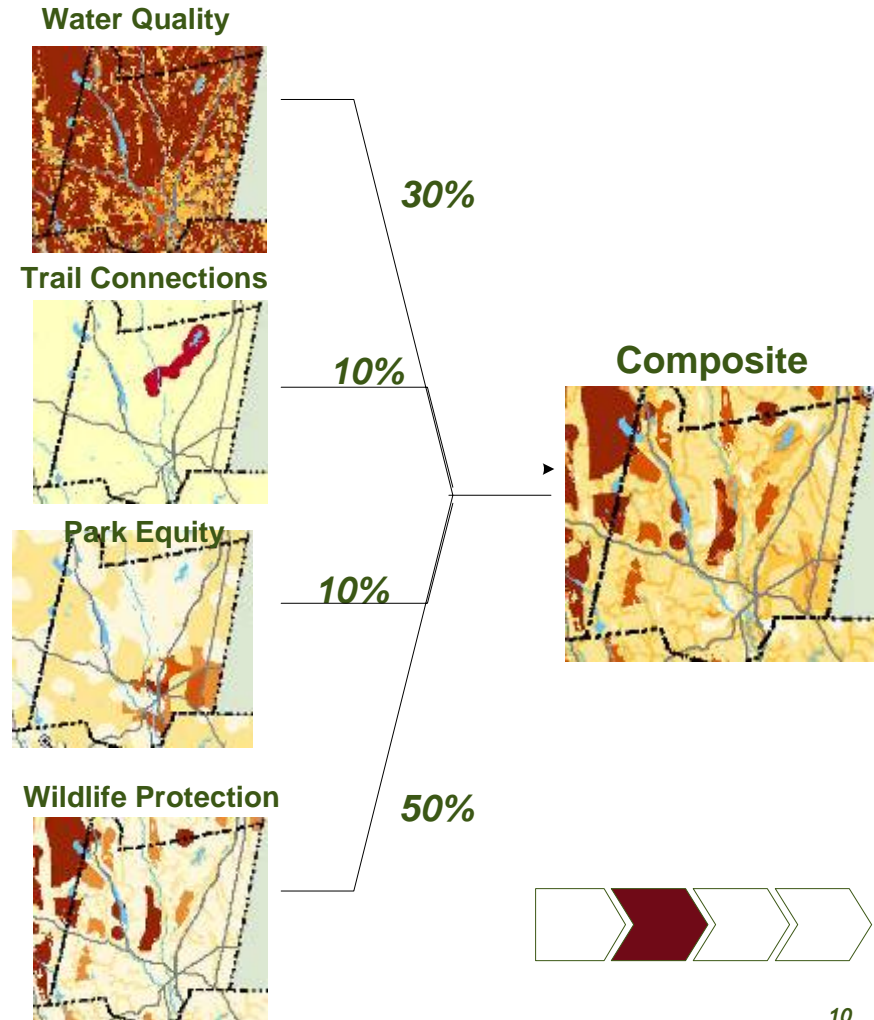


TPL Water Quality Greenprint Model



Greenprinting – a land prioritization tool

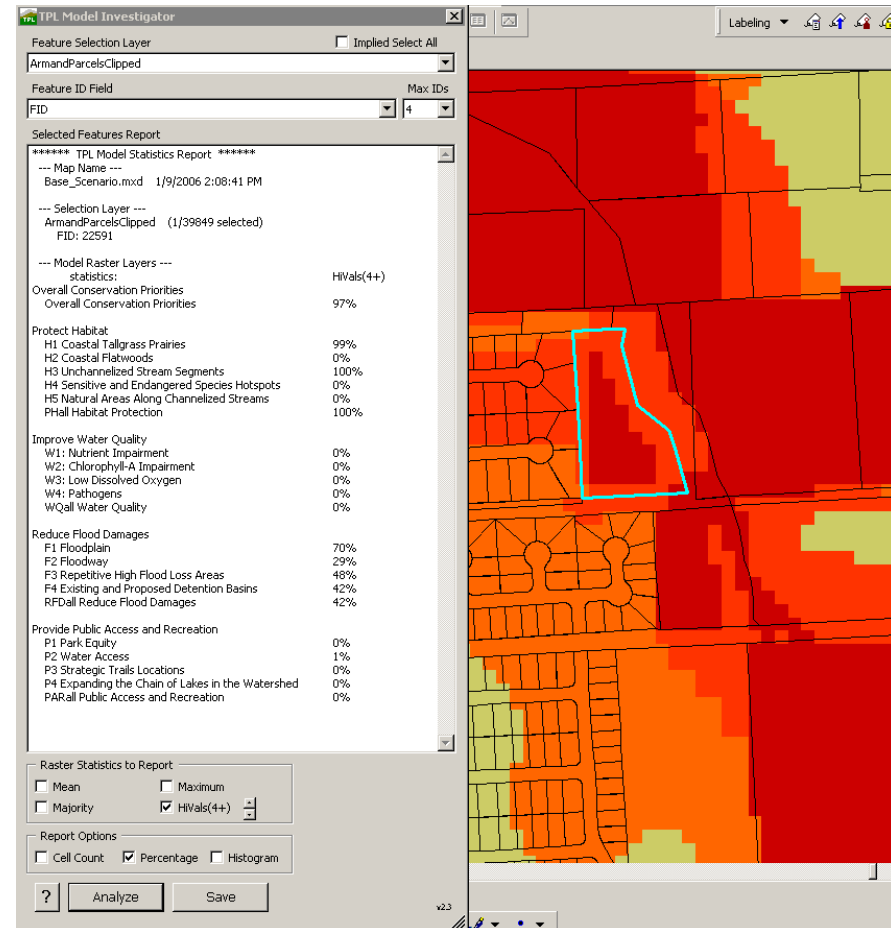
1. Create models that prioritize land based on each individual goal.
2. Weigh goals to reflect local priorities and combine in a composite map.
3. Create alternative conservation scenarios to create conservation priority map with broad support.



Greenprinting Results (cont.)

Model Investigator

- High priority parcel analysis tool.
- Shows how well a parcel scored in meeting community's conservation goals.



Protecting Land as Smart Growth and Clean Water Tool

- Brief Overview of TPL
- Deciding where to protect
- Protecting land using voluntary, market-based tools
- How to pay for it



Why use voluntary, market-based tools?

- Conservation permanently protects critical natural resources.
- Reimburses landowners fairly for value of property and avoids undue burden on landowners with sensitive land
- Affords more control for land management practices, even outside the community's jurisdiction.
- Can be blended with other regulatory and voluntary strategies, such as zoning and BMPs.

Selecting the appropriate tool

Want to protect just the most ecologically sensitive portions of any parcel, or strip of land for greenways

- Land use regulations
- Easements

Want to protect large natural resource areas

- Zoning
- Land acquisition or purchase of development right

Want to create public parks

- Land acquisition

Working with land trusts

Landowner negotiations

Fundraising

Acquiring and managing
land or easements



Protecting Land as Smart Growth and Clean Water Tool

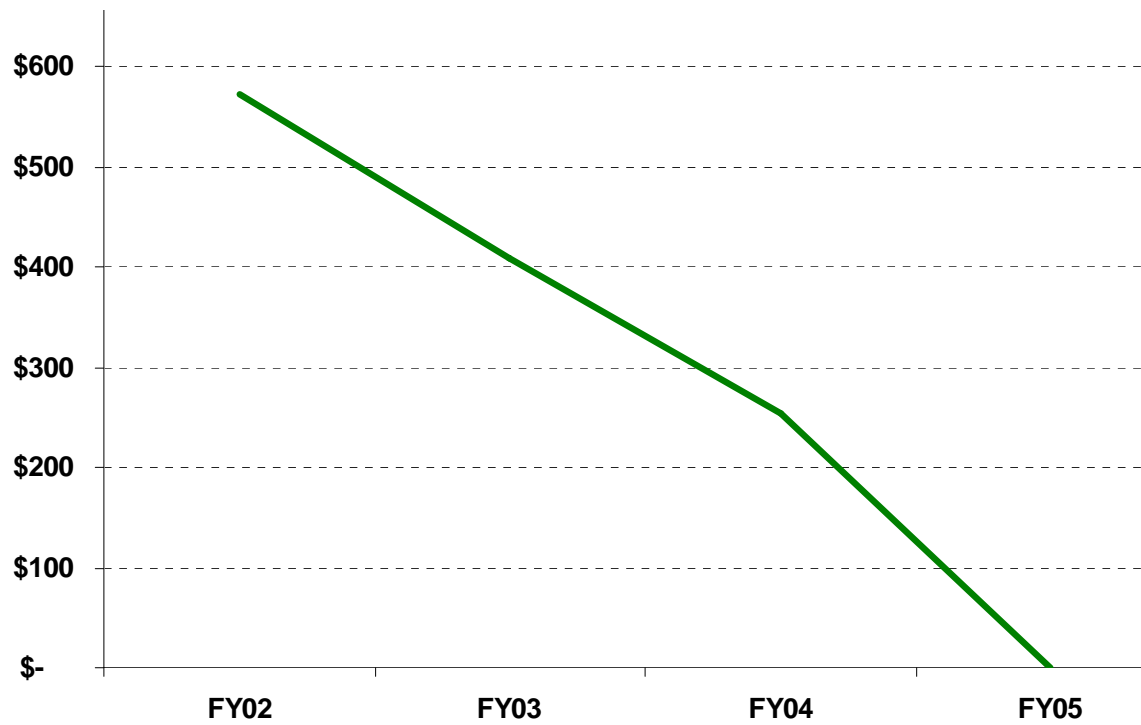
- Brief Overview of TPL
- Deciding where to protect
- How to protect land using voluntary, market-based tools
- How to pay for it



Why Local Conservation Finance is Essential

- Local funding is the foundation of any long-term land conservation efforts
- External funding – federal, state, private– can be an important, but secondary source
- Competition for external funding is fierce and may not be reliable due to ever-changing state and federal budget circumstances

Decline in Federal Conservation Dollars 2002 - 2005

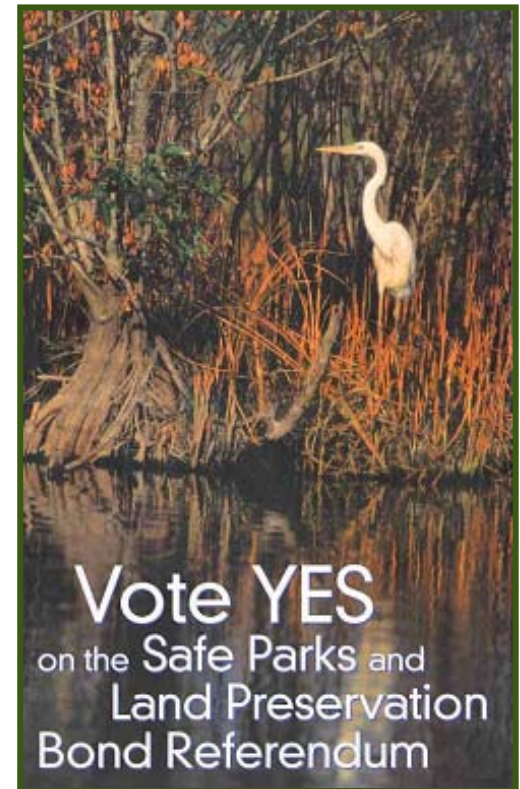


LWCF, FLP and NAWCA Source: *The Conservation Fund*

Conservation Finance

Creating new public funds through local and state public finance measures

1. Worked on over 350 measures nation-wide
2. 80% success rate
3. Created over \$22 billion in new public funds for conservation and parks



People care about clean water

Water quality is consistently most important reason voters support new funding for land conservation.

Drinking water protection is the top reason for supporting land conservation.



Edwards Aquifer

For more information

Caryn Ernst

Trust for Public Land

660 Pennsylvania Ave SE, Suite 401

Washington DC, 20003

202/543-7552

caryn.ernst@tpl.org