

Identifying Land to Conserve in Washington County, Tennessee



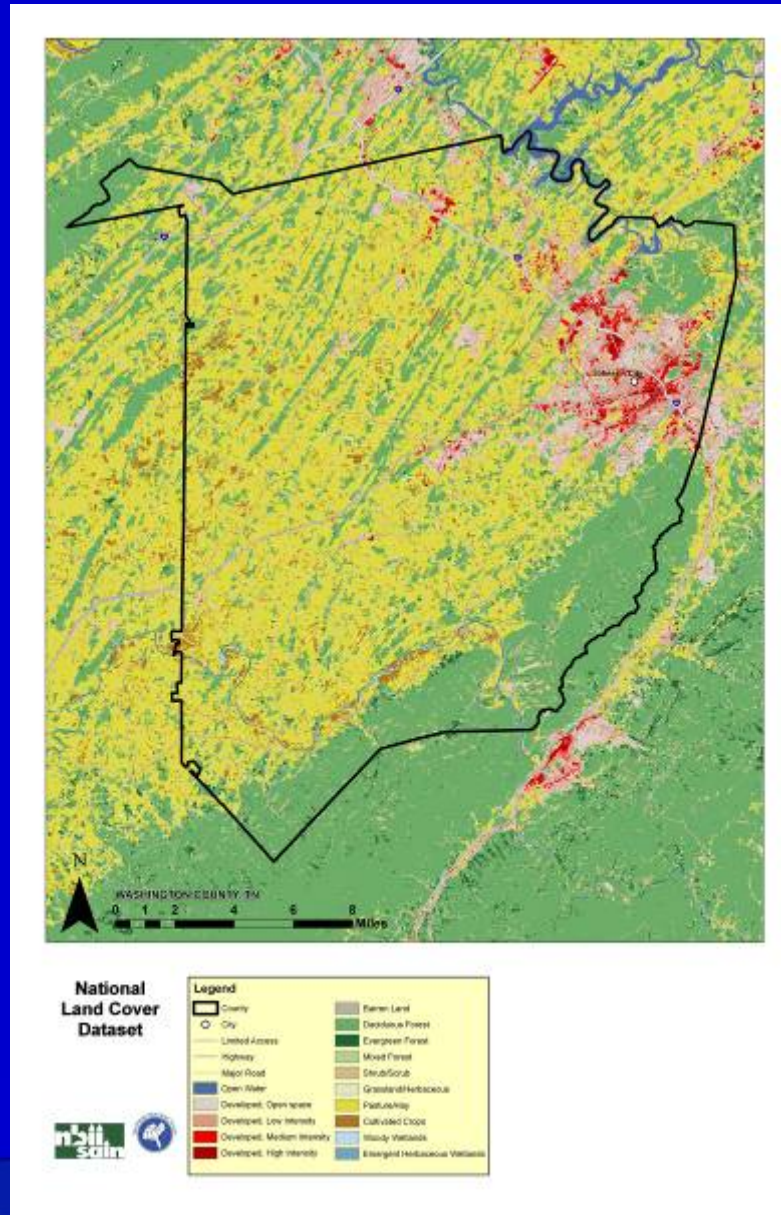
Identify Land to Conserve

Using GIS Maps

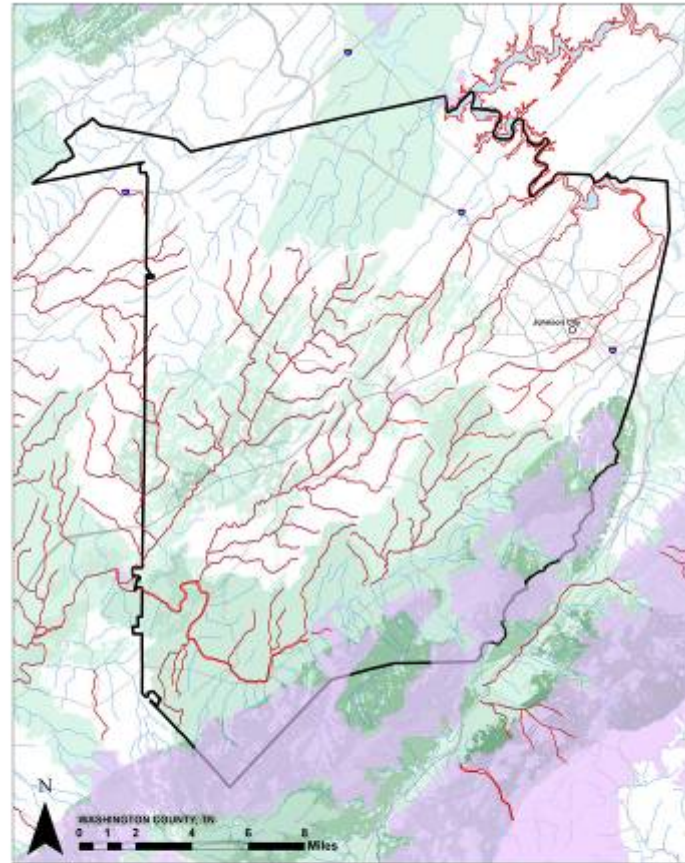
- Watershed boundaries
- Land Cover
- Forest Canopy Cover
- Impervious Cover
- Streams and stream condition
- Protected lands
- Riparian buffers
- Floodplains
- Wetlands
- Source water intake locations
- Valuable habitat areas
- Working lands such as farmland
- Cultural/historic Lands.



Land Cover



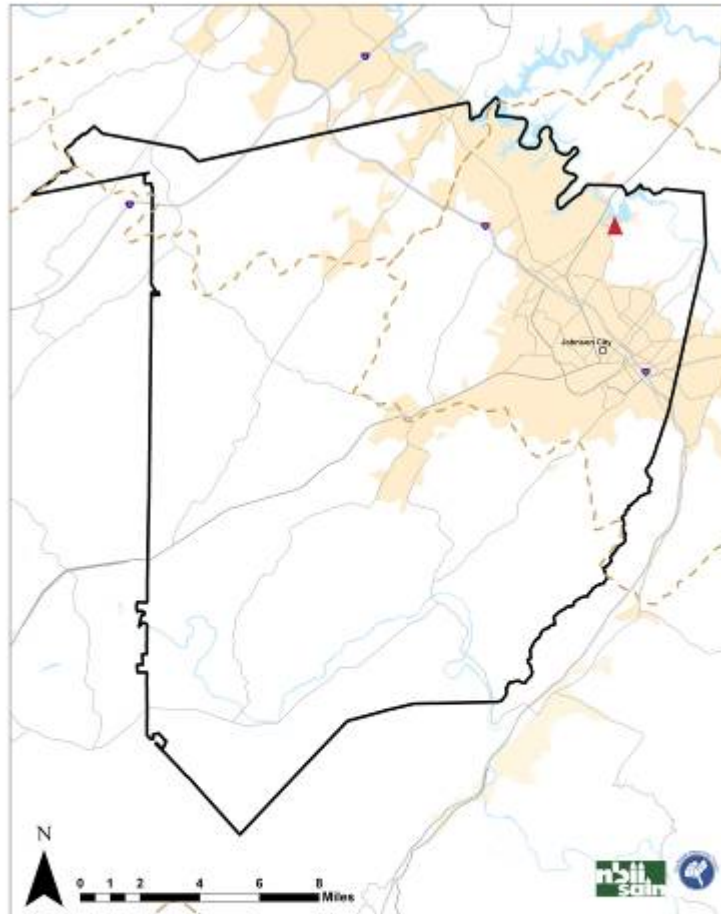
Protected Lands, SWAP, & Impaired Streams



**Comprehensive Wildlife
Conservation Strategy
with
Impaired Streams and
Protected Areas**



Base Map



Legend	
	Hydrologic Unit Code
	City
	County
	Limited Access
	Highway
	Main Road
	Perennial Water or pond
	Upland Area
	Fictional Water Intake

Exercise:

Identifying Key Areas to Conserve

- **Identify possible areas to conserve to**
 - Protect drinking water and fully-supporting/high quality streams
 - Protect open space for critical wildlife habitat and for recreational use
- **Draw them on the mylar overlay map**
- **Identify and label your top 3 priorities**
- **Record your reasons on a flip chart**
- **Select a spokesperson**

