



Linking Land Use Decisions to Water Resources with GIS

**7th Annual New Partners for Smart Growth
Protecting Natural Resources with Land Use Decision
Support Tools**

February 7, 2008

Project Goal

- Measure the effectiveness and usability of existing GIS decision support tools as they apply to counties.

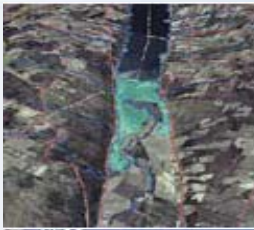
Tool Assessment Rankings

<u>Tool</u>	<u>Percentage of Respondents that stated the tool could benefit their county's decision making process</u>
What If?	76%
Community Viz	53%
L-THIA	47%
ISAT	41%
N-SPECT	41%
Integrated Model	41%
WARMF	29%

County Water Quality Issue Brief

Using GIS Tools to Link Land Use
Decisions to Water Resource Protection

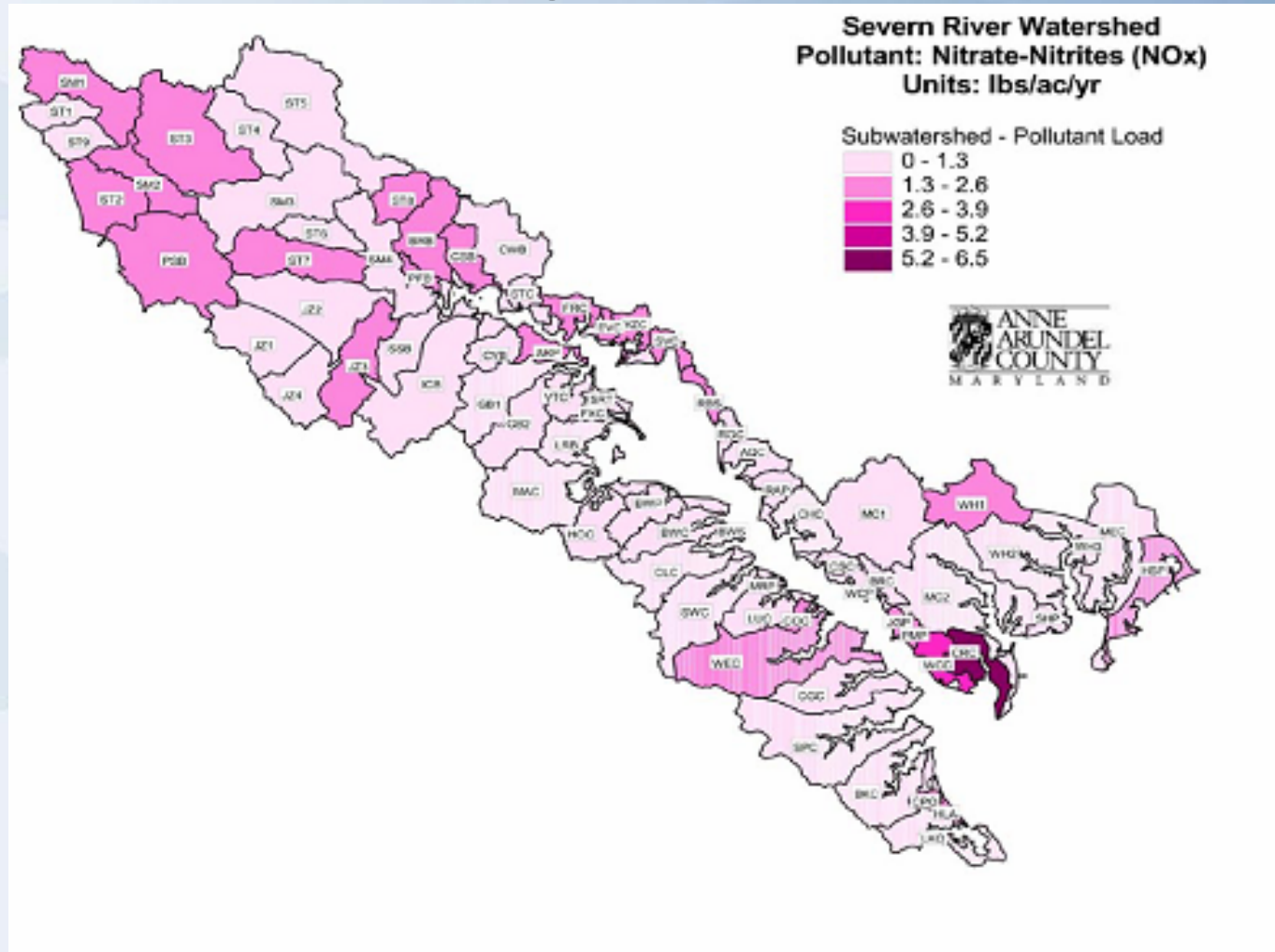
Commonly Used Tools
Available to Counties
and County Best Practices



Case Studies – Counties / Tools

- Anne Arundel County, MD – In-house
- Summit County, OH – What If?
- Albany County, WY – Community Viz™
- Baldwin County, AL – In-house
- Summit County, CO – WARMF

Anne Arundel County, MD: Stormwater Management and TMDLs



NACo Contacts

James Davenport

Project Manager

jdavenport@naco.org

202-661-8807

Pedro Flores

GIS Outreach Director

pflores@naco.org

202-942-4247